



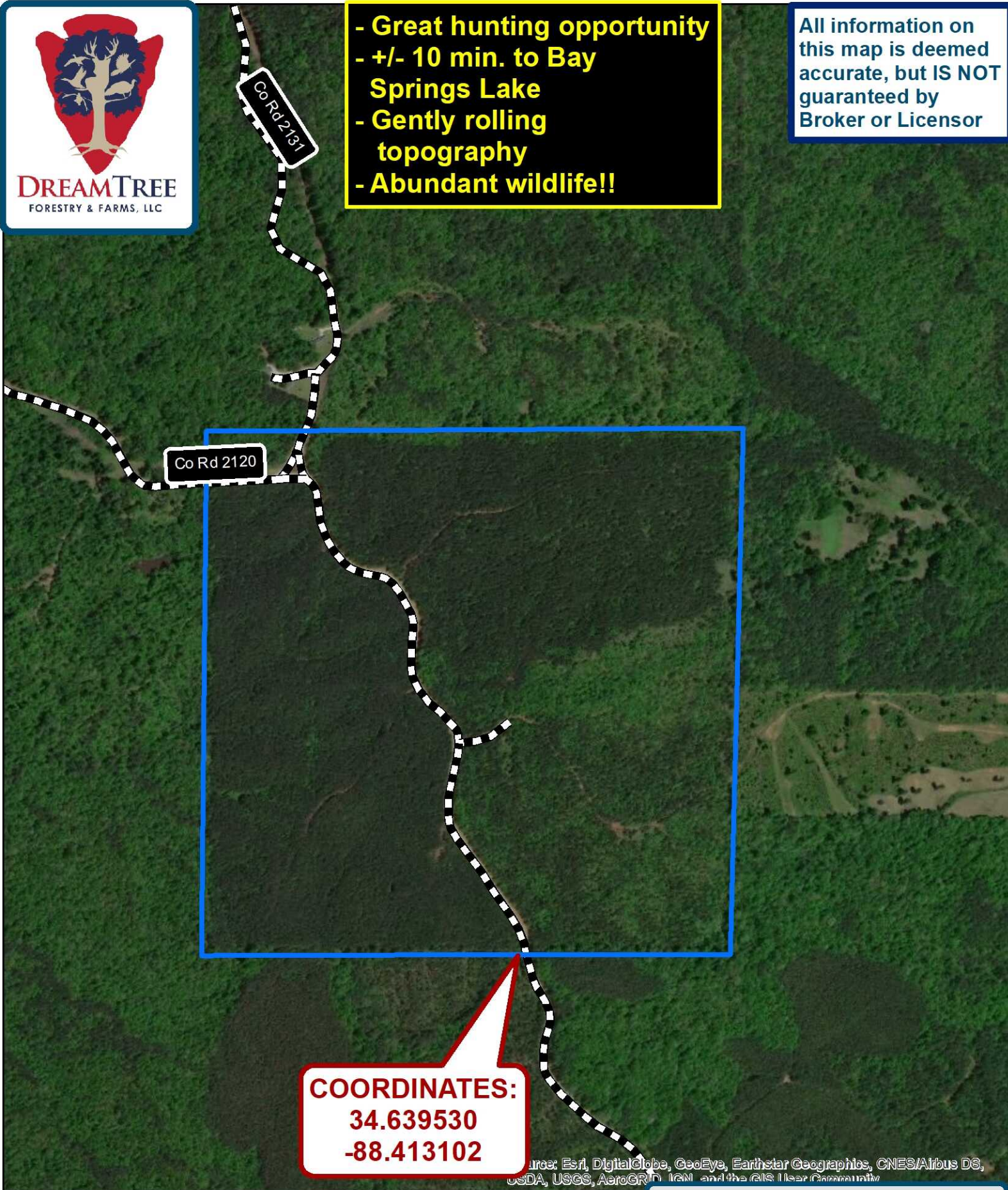
HUNTING LEASE AVAILABLE

- **+/-160 acres – Prentiss County, MS**
- **Located on County Road 2120**
- **Good network of interior trails**
- **Located just a few minutes from additional public hunting on the Divide Section WMA.**
- **Great whitetail deer and eastern wild turkey hunting.**
- **Located in Prentiss County near Burton, MS & Booneville, MS (New Hope Community)**
- **Hunting Lease Annual Premium 2019-2020: \$1,104.00 (\$6.50/acre) *note: this rate includes the required insurance premium.**
- **COORDINATES: 34.639486, -88.413140**
- **NEAREST ADDRESS (neighbor's address): 225 County Road 2131, Booneville, MS 38829**



- Great hunting opportunity
- +/- 10 min. to Bay Springs Lake
- Gently rolling topography
- Abundant wildlife!!

All information on this map is deemed accurate, but IS NOT guaranteed by Broker or Licensor



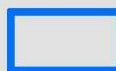
COORDINATES:
34.639530
-88.413102

Source: Esri, DigitalGlobe, GeoEye, Earthstar Geographics, CNES/Airbus DS, USDA, USGS, AeroGRID, IGN, and the GIS User Community



0 625 1,250 2,500 Feet

Legend



Property Boundary +/-160 acres

Legend



Property Boundary +/-160 acres

All information on this map is deemed accurate, but IS NOT guaranteed by Broker or Licenser

Altitude Community

Hwy 364

COORDINATES:
34.639530
-88.413102

New Hope Community

Sources: Esri, HERE, DeLorme, USGS, Intermap, INCREMENT P, NRCan, Esri Japan, METI, Esri China (Hong Kong), Esri Korea, Esri (Thailand), MapmyIndia, NGCC, © OpenStreetMap contributors, and the GIS User Community



DREAMTREE
FORESTRY & FARMS, LLC

PRENTISS COUNTY, MS



0

0.375

0.75

1.5

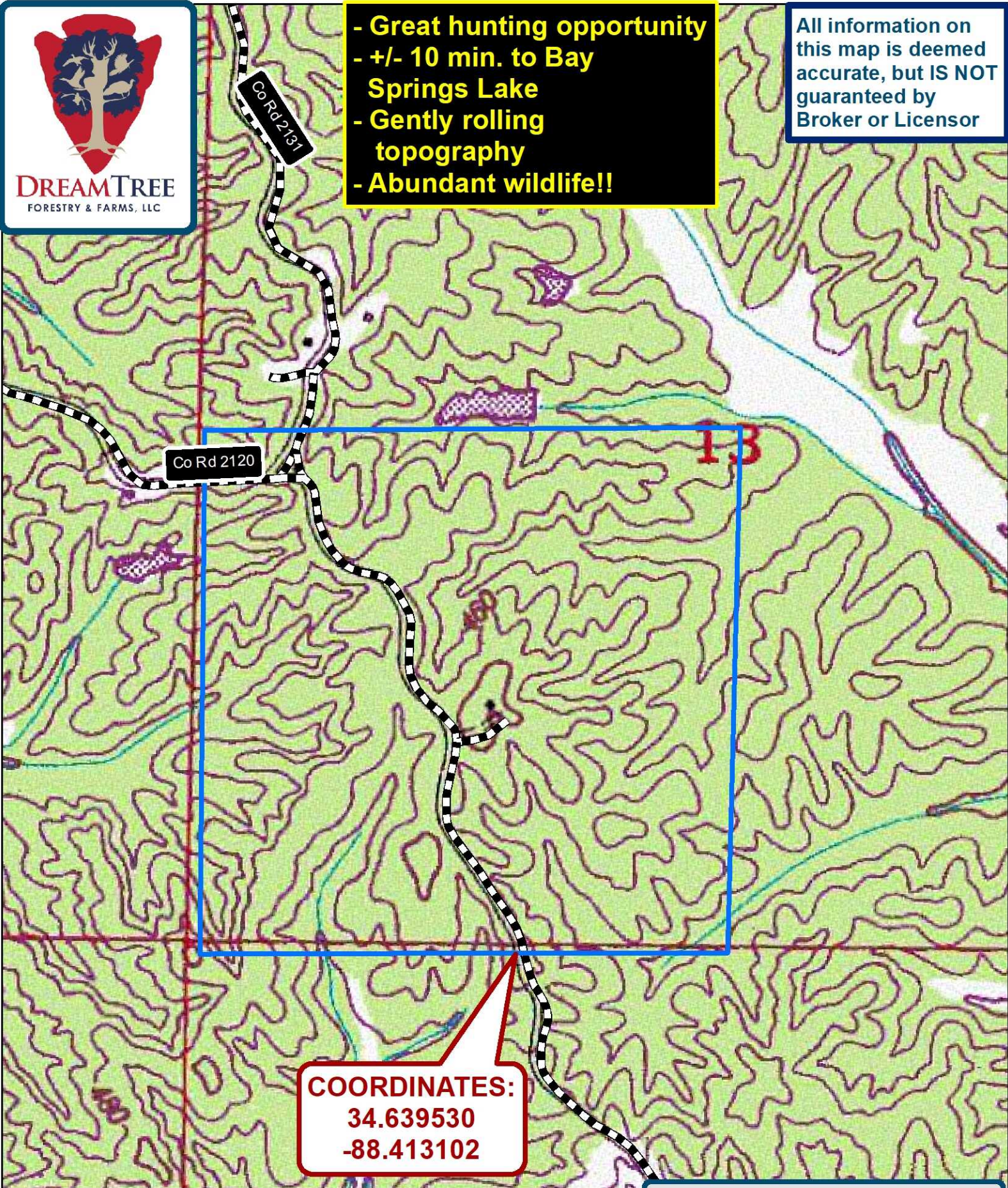
Miles



DREAMTREE
FORESTRY & FARMS, LLC

- Great hunting opportunity
- +/- 10 min. to Bay Springs Lake
- Gently rolling topography
- Abundant wildlife!!

All information on this map is deemed accurate, but IS NOT guaranteed by Broker or Licensor

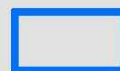


COORDINATES:
34.639530
-88.413102



0 625 1,250 2,500 Feet

Legend



Property Boundary +/-160 acres