

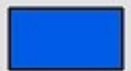
Legend



Property Boundary +/-183.43



Recently Harvested

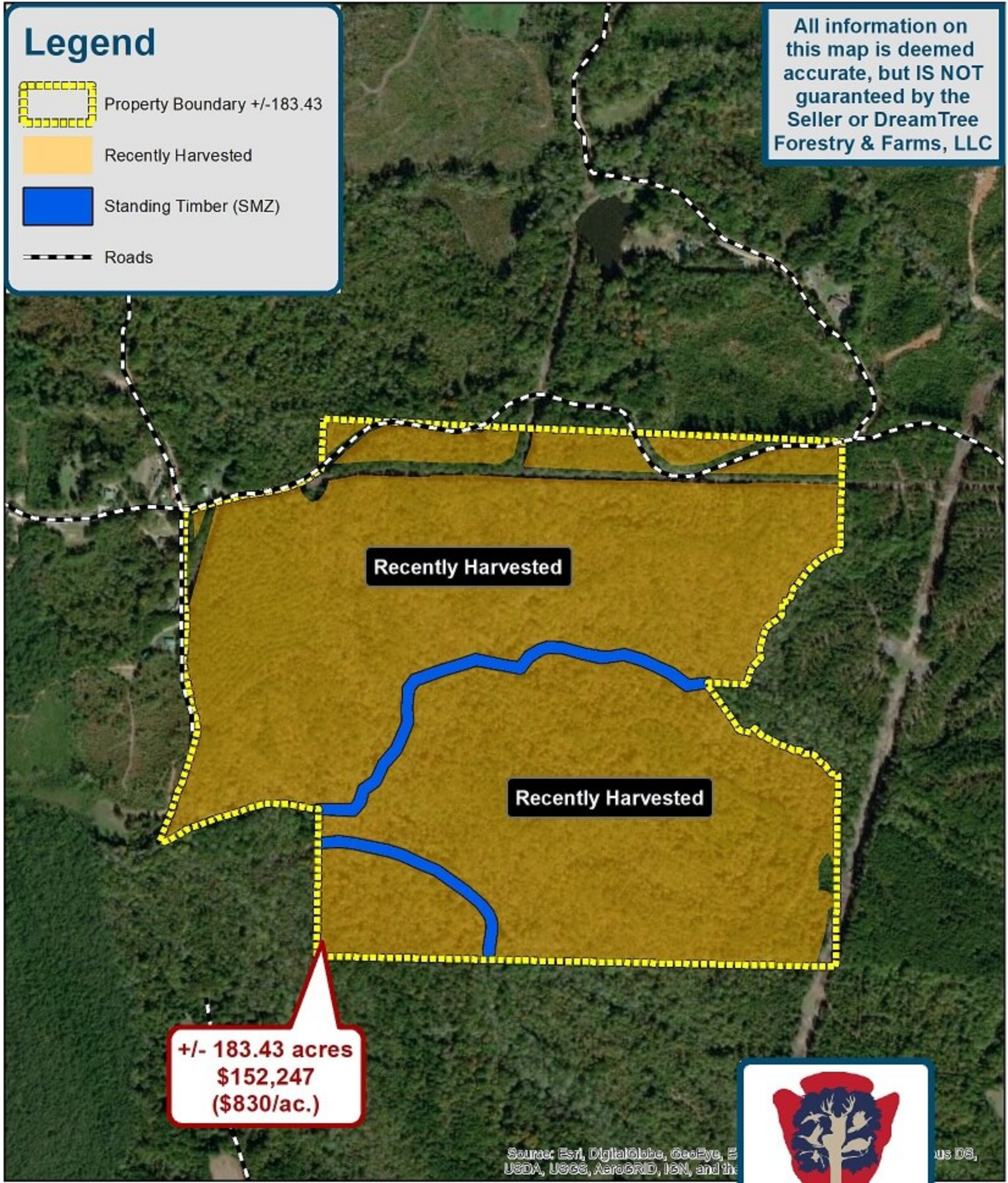


Standing Timber (SMZ)



Roads

All information on this map is deemed accurate, but IS NOT guaranteed by the Seller or DreamTree Forestry & Farms, LLC



+/- 183.43 acres
\$152,247
(\$830/ac.)

Source: Esri, DigitalGlobe, GeoEye, Earthstar (IGN), USDA, USGS, AeroGRID, IGN, and the



Legend



Property Boundary +/-183.43



Recently Harvested

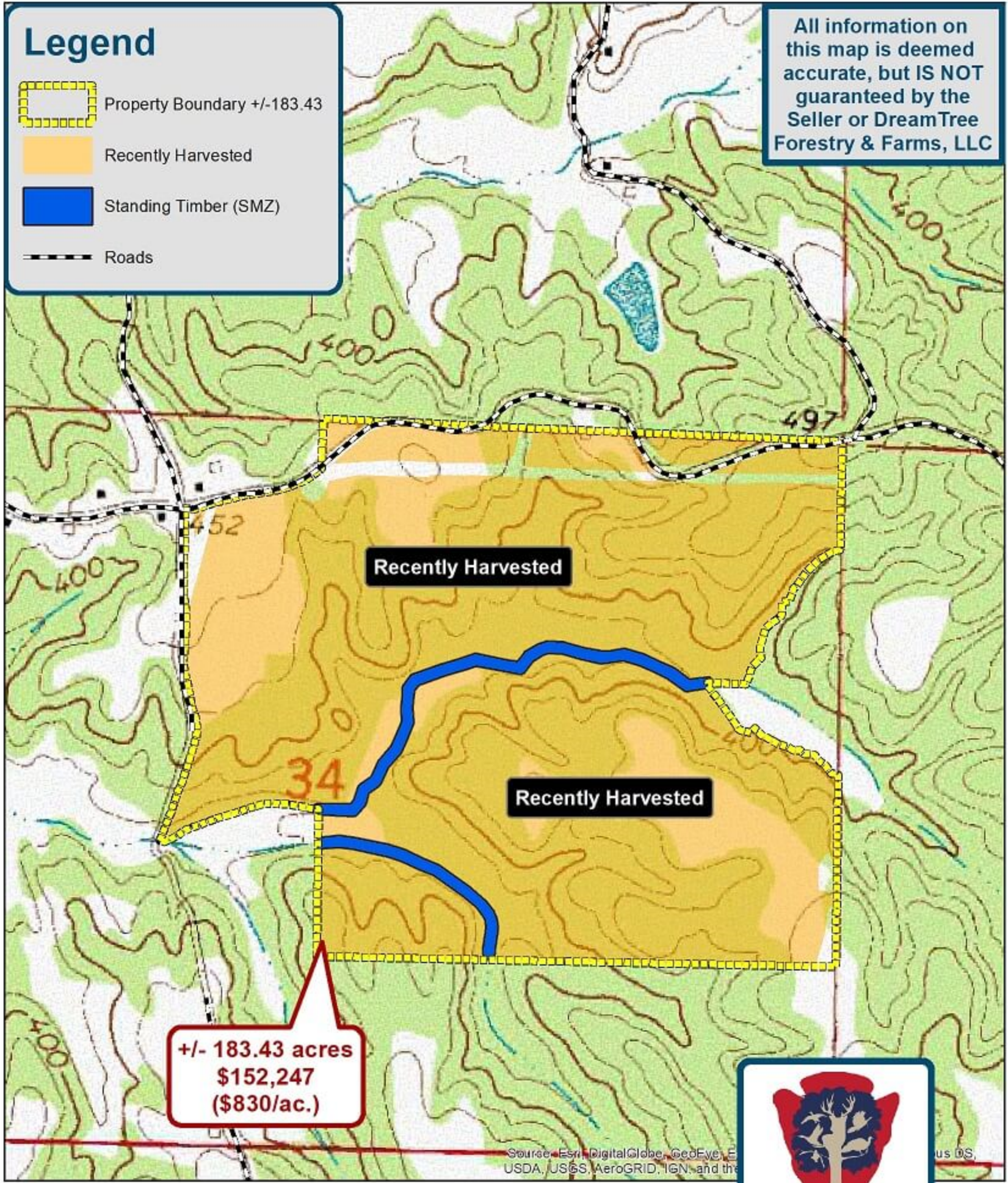


Standing Timber (SMZ)



Roads

All information on this map is deemed accurate, but IS NOT guaranteed by the Seller or DreamTree Forestry & Farms, LLC



Recently Harvested

Recently Harvested

+/- 183.43 acres
\$152,247
(\$830/ac.)

Source: Esri, DigitalGlobe, GeoEye, USDA, USGS, AeroGRID, IGN, and the

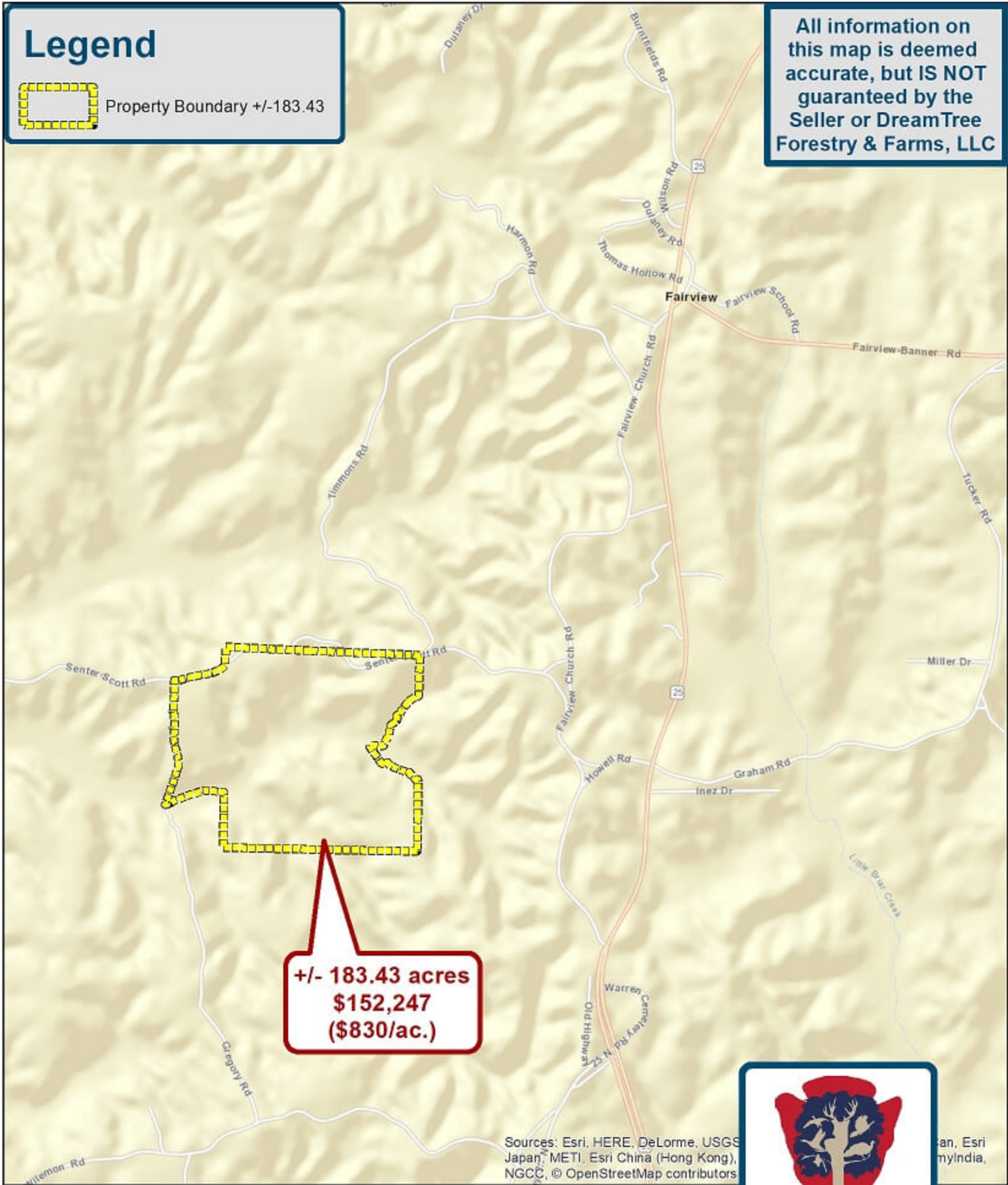


Legend



Property Boundary +/-183.43

All information on this map is deemed accurate, but IS NOT guaranteed by the Seller or DreamTree Forestry & Farms, LLC



+/- 183.43 acres
\$152,247
(\$830/ac.)

Sources: Esri, HERE, DeLorme, USGS, Japan, METI, Esri China (Hong Kong), NGCC, © OpenStreetMap contributors



an, Esri
myIndia,

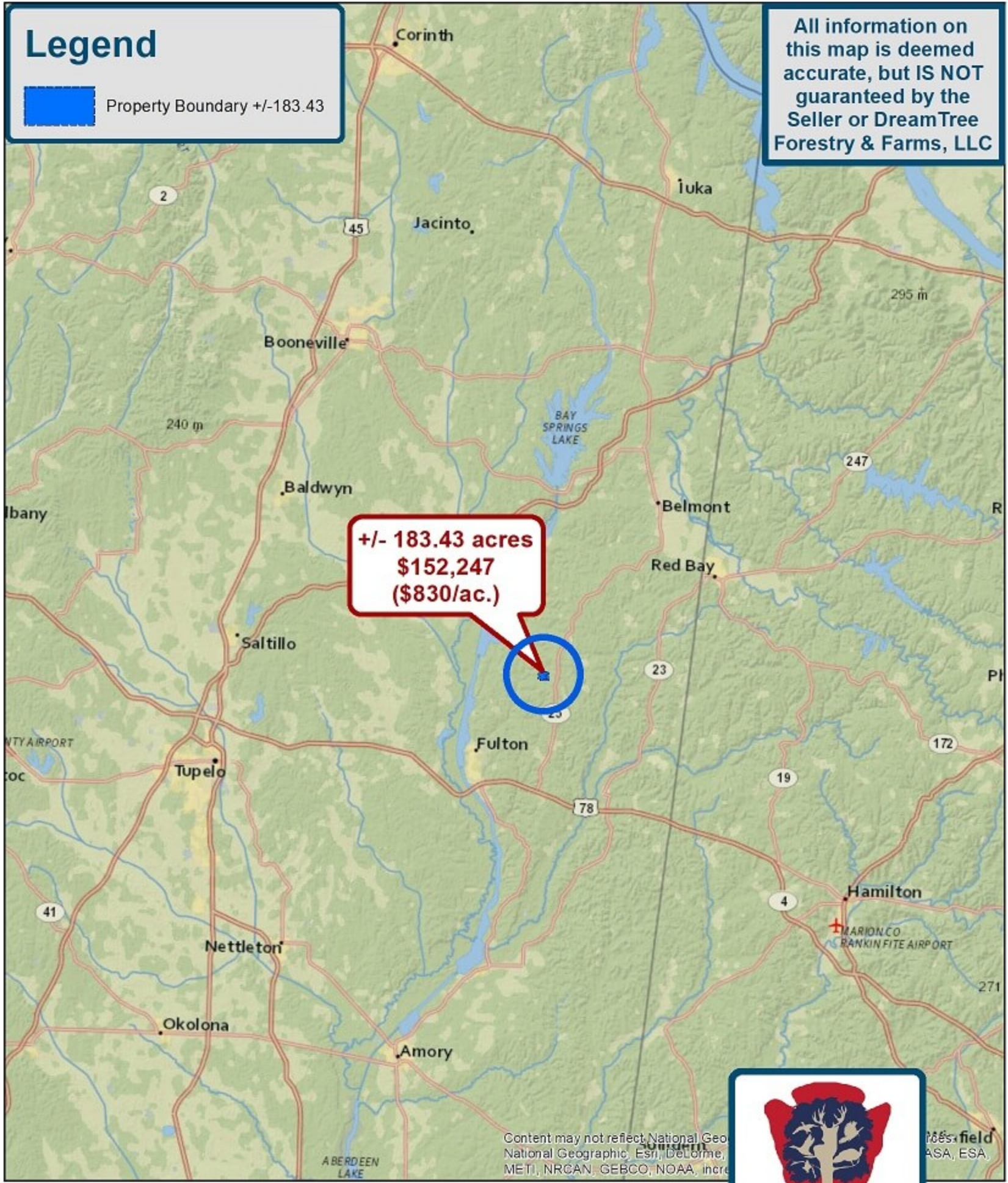
Legend



Property Boundary +/-183.43

All information on this map is deemed accurate, but IS NOT guaranteed by the Seller or DreamTree Forestry & Farms, LLC

+/- 183.43 acres
\$152,247
(\$830/ac.)



Content may not reflect National Geographic, Esri, DeLorme, METI, NRCAN, GEBCO, NOAA, etc.

