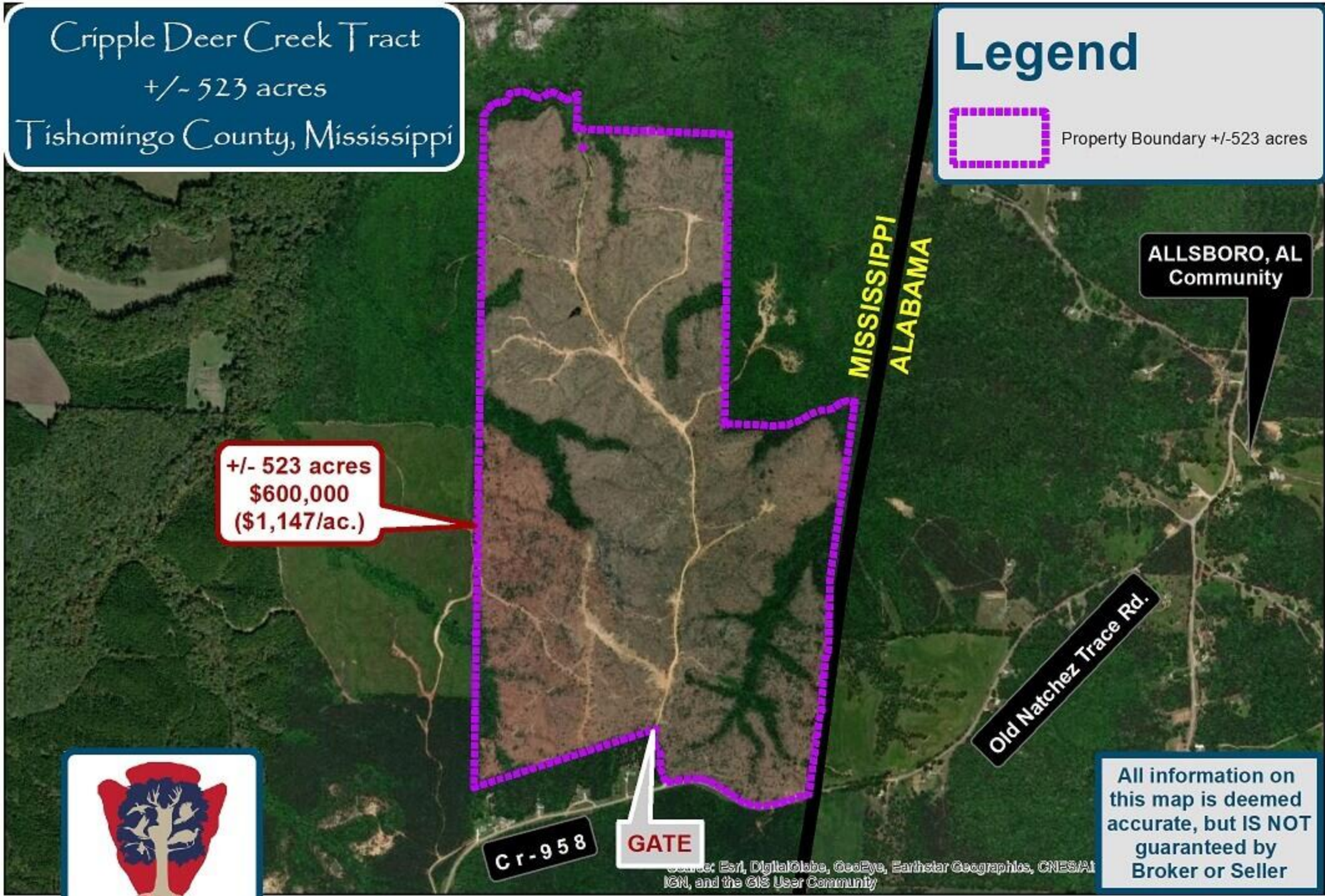


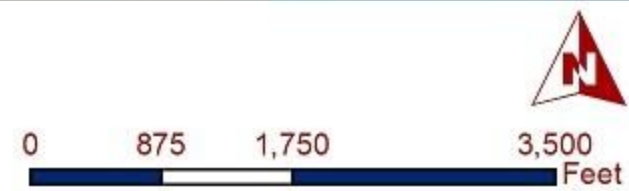
Cripple Deer Creek Tract
+/- 523 acres
Tishomingo County, Mississippi

Legend

 Property Boundary +/-523 acres



CALL: Justin M. Tapp, R.F.
Office: (662) 416-8193
Email: Justin @ goDreamTree.com

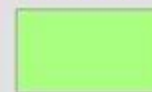


Cripple Deer Creek Tract
+/- 523 acres
Tishomingo County, Mississippi

Legend



Property Boundary +/-523 acres



2 yr. old pine plantation +/-455 acres



+/-70 yr. old hardwood +/-62 acres

+/- 523 acres
\$600,000
(\$1,147/ac.)

ALLSBORO, AL
Community

Old Natchez Trace Rd.

All information on
this map is deemed
accurate, but IS NOT
guaranteed by
Broker or Seller



DREAMTREE
FORESTRY & FARMS, LLC

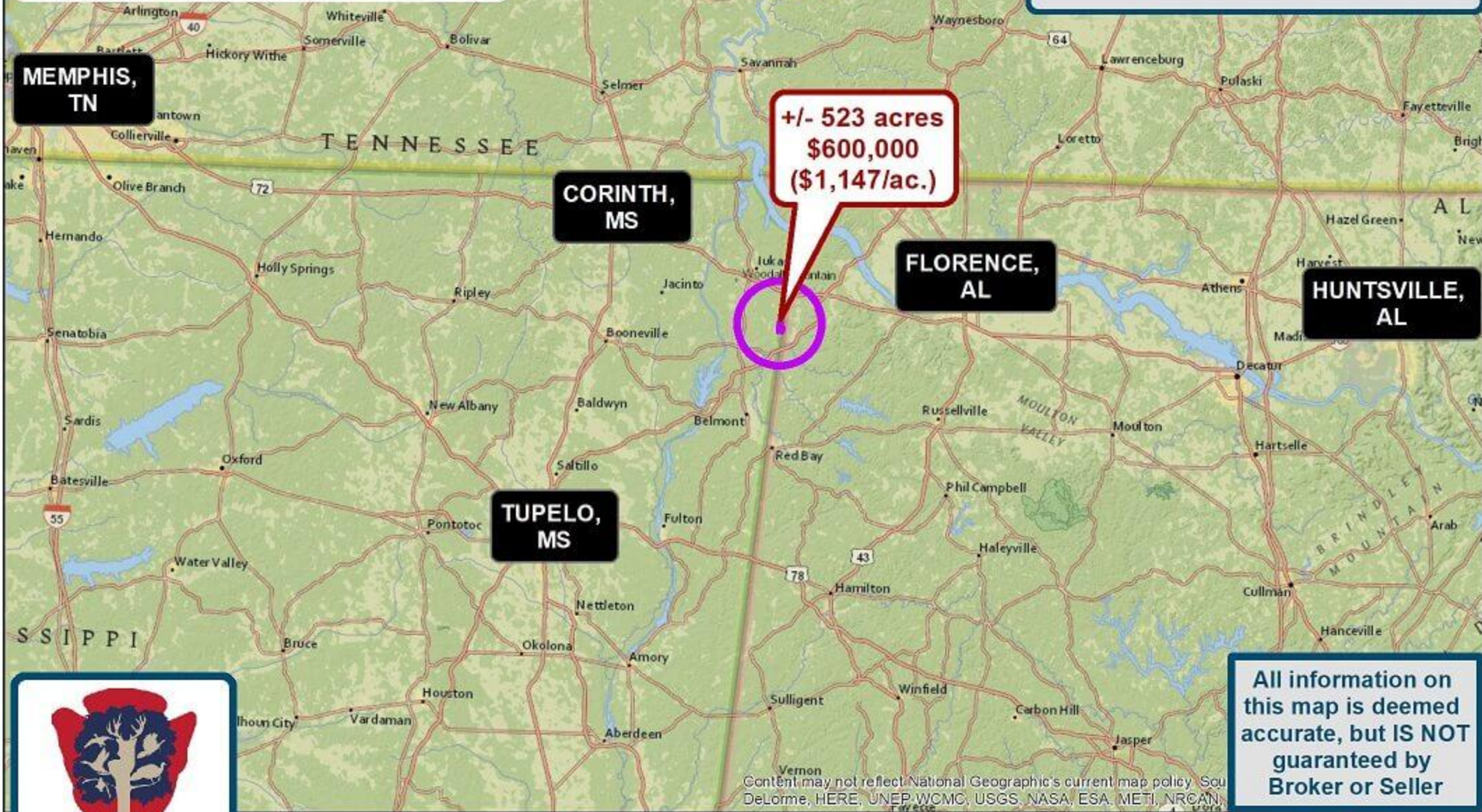
CALL: Justin M. Tapp, R.F.
Office: (662) 416-8193
Email: Justin @ goDreamTree.com



Cripple Deer Creek Tract
+/- 523 acres
Tishomingo County, Mississippi

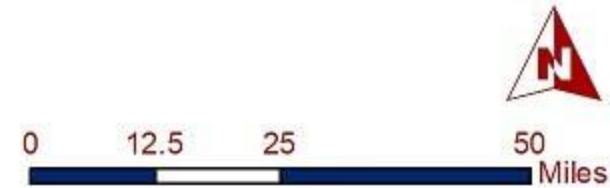
Legend

 Property Boundary +/-523 acres



CALL: Justin M. Tapp, R.F.
Office: (662) 416-8193
Email: Justin @ goDreamTree.com

All information on this map is deemed accurate, but IS NOT guaranteed by Broker or Seller



Cripple Deer Creek Tract
+/- 523 acres
Tishomingo County, Mississippi

Legend

 Property Boundary +/-523 acres

+/- 523 acres
\$600,000
(\$1,147/ac.)

ALLSBORO, AL
Community

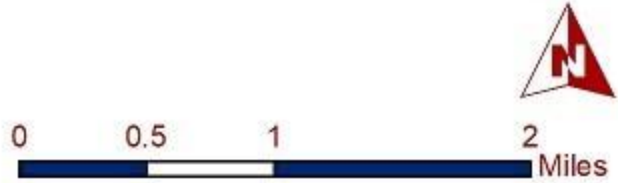
TISHOMINGO,
MS

All information on
this map is deemed
accurate, but IS NOT
guaranteed by
Broker or Seller



CALL: Justin M. Tapp, R.F.
Office: (662) 416-8193
Email: Justin @ goDreamTree.com

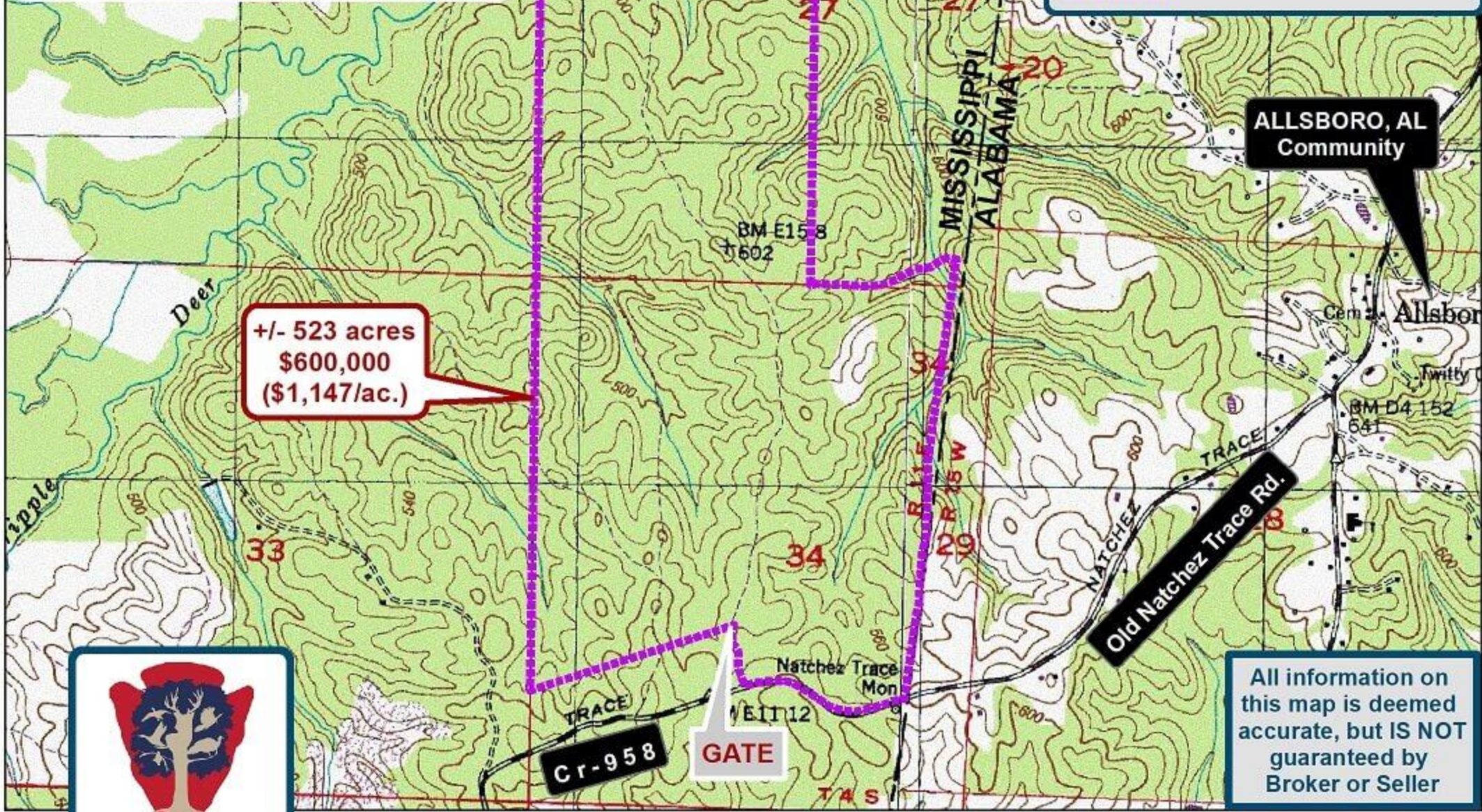
Sources: Esri, HERE, DeLorme, USGS, Intermap, INCREMENT P, NR
(Hong Kong), Esri Korea, Esri (Thailand), MapmyIndia, NGCC, © Open
GIS User Community



Cripple Deer Creek Tract
+/- 523 acres
Tishomingo County, Mississippi

Legend

 Property Boundary +/-523 acres



+/- 523 acres
\$600,000
(\$1,147/ac.)

ALLSBORO, AL
Community

All information on
this map is deemed
accurate, but IS NOT
guaranteed by
Broker or Seller



CALL: Justin M. Tapp, R.F.
Office: (662) 416-8193
Email: Justin @ goDreamTree.com

